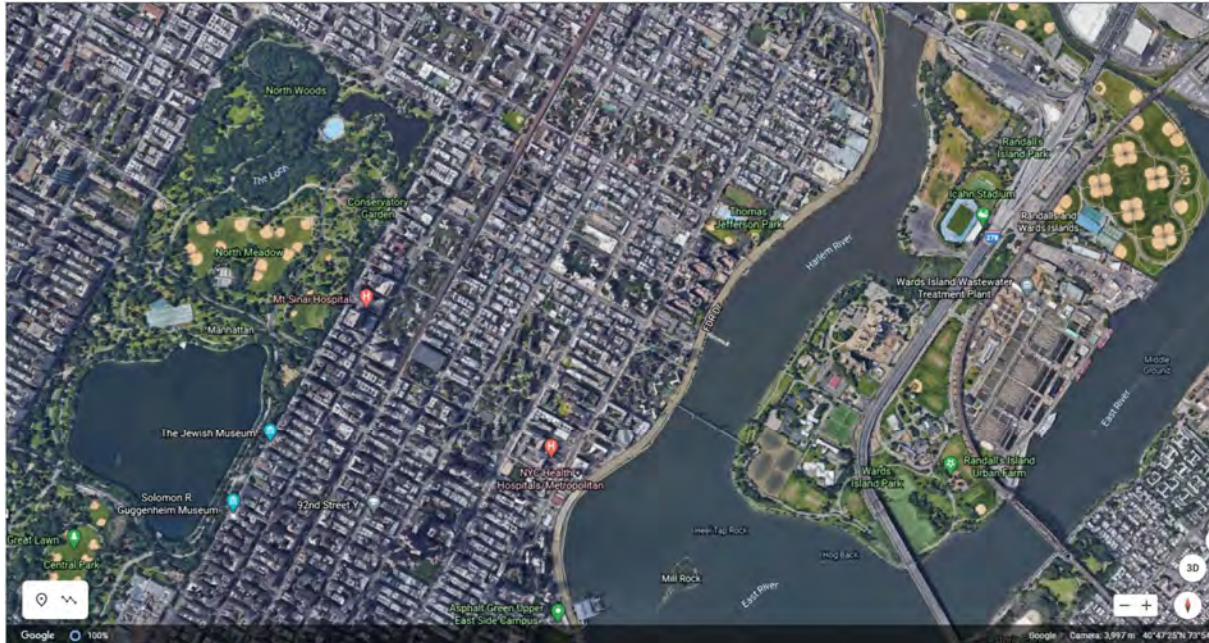


East River Esplanade, 90th to 125th Streets

2/24/2021 Update 2



Map of East River Esplanade, west side of the Harlem River from Transfer station (bottom of photo) at 90th Street to RFK Bridge at 125th Street (top of photo). Central Park and Randal's Island are included for context. East Harlem has few parks of its own besides the Esplanade.

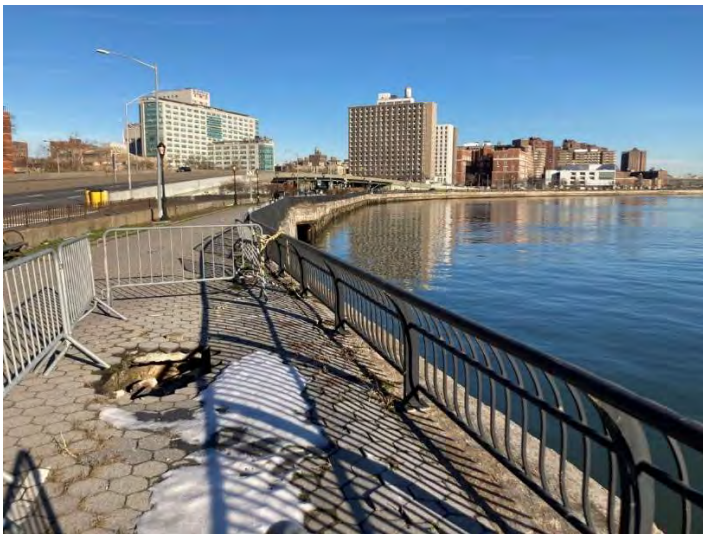


Photo 1 : Looking north from 93rd street, typical sink hole, one of many. See "A" on Keymap



Close up of the same sink hole. See "A" on the keymap, page 3.

Above: Hexagonal pavers and concrete topping have collapsed into a **cavity formed by tidal action and water seeping underneath the structure**. This happens frequently along the esplanade. Temporary barriers are installed for safety here.



Photo 2 Looking north from 98th St. Another sinkhole from tidal action. The FDR drive can be seen to left, adjacent to eroding structure.



Fencing around multiple sinkholes often leaves only a narrow strip of bare earth between fencing and the FDR



Photo 4: Pier at 107th Street: See "C" on Keymap
Potentially at major destination, it has deteriorated and been deemed unsafe and closed.



Photo 5: The smaller pier at 110th street is deteriorated and closed to public. It could be destination for fishing or sitting, away from FDR.



Photo 6: The remaining areas have minimal planting to obscure noises of nearby cars.



Photo 7: Esplanade north of 114th street has all been closed for safety concerns from structure. See "D" on Keymap, page .



Photo 3: Typical Railing near 105th Street looking north. Concrete is deteriorating under the rails. Balusters in background are not attached to anything as the concrete is missing



For comparison and to show potential: Around 112th street across from Thomas Jefferson Park, this brief section has better planting and not yet any collapsing sink holes. In addition to repairs needed elsewhere, preventative structural work will be needed to preserve the remaining places like this.



Keymap showing 91st – 125th Street.



Above: Fencing at 117th street, looking south.

Photo Key for this letter – see map at right.

- (A) Sinkhole at 94th St.
- (B) Sinkhole and fencing at 101st St.
- (C) Closed Pier at 107th St.
- (D) Fencing at 114th street that blocks all traffic trying to go north
- (E) Fencing at 117th street blocks all traffic heading south.

Note: the area north of 121st street is also closed off by fencing for approximately five years, waiting for installation of safety railings.